

The background features a complex network of blue lines and arrows. Solid lines intersect at various angles, while dashed lines form loops and paths. Small circles, some filled and some hollow, are placed at various points along the lines, suggesting nodes or waypoints in a network or map.

Sponsored Project Services Update: Let's Take a Walk Down the Yellow Brick Road

October 2023

The YELLOW BRICK ROAD

A photograph of a yellow brick road curving through a green field towards a large tree in the background. The road is made of yellow bricks and is the central focus of the image. The field is green and the tree is large and dark.

Strategy —how will we get to the goal

- the path we identify as the best, smartest way to accomplish our goal
- each yellow brick represents an action step—or tactic that goes into executing our strategy

WHAT are we doing?

- Reviewing the research support infrastructure
- Pre & post award support staff (SPS & academic units only; excludes TTO, IRB, ORA & support staff pd on a grant)

WHEN are we doing it?

- When resources allow
- January 2024 (too aggressive)
- CAS pilot (Nov-Dec 2023)
- Ongoing transition where opportunities allow

WHO does it affect?

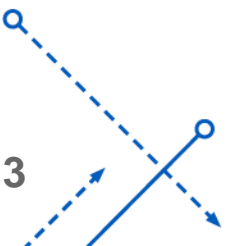
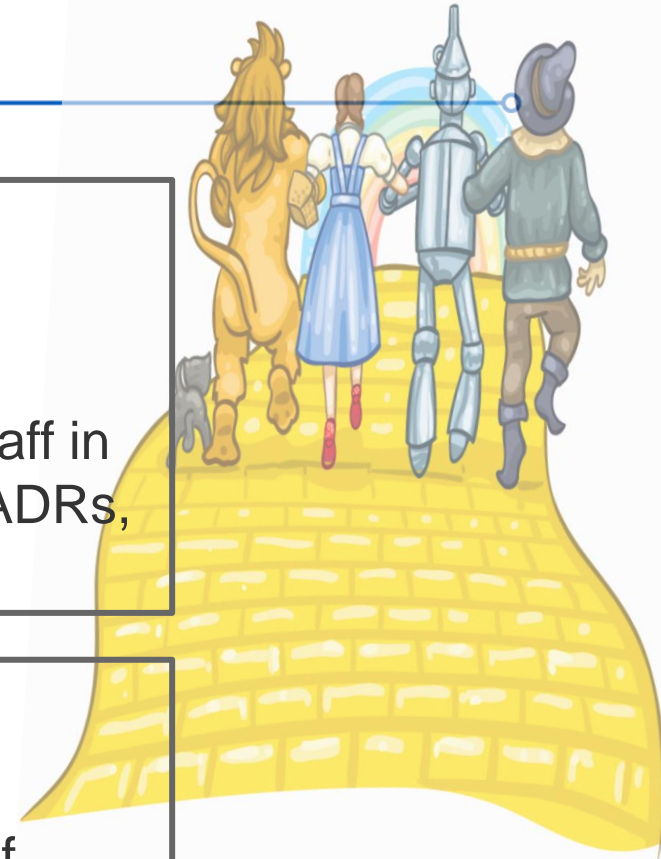
- Well ... almost EVERYONE
- PIs, research support staff, staff in HR, PR, purchasing, deans, ADRs, UBOs, your friends, etc

WHY are we doing it?

- To create a solid foundation of services to support doubling our research expenditures

WHERE are we doing it?

- Good question 😊 SPACE???



HOW are we going to do it

Central Office

- Outward facing
- Sponsor/agency interactions
- Compliance
- Signatory authority
- Close out

Decanal Units

- Inward facing
- PI support
- Proposal creation & review
- Post award transaction
- Award management for PIs

Guiding Principals

- No process will be duplicated – everything will happen in one place only
- Base position descriptions, starting salaries, training, hybrid/remote positions etc will be consistent across campus

HOW are we going to do it



Existing unit staff



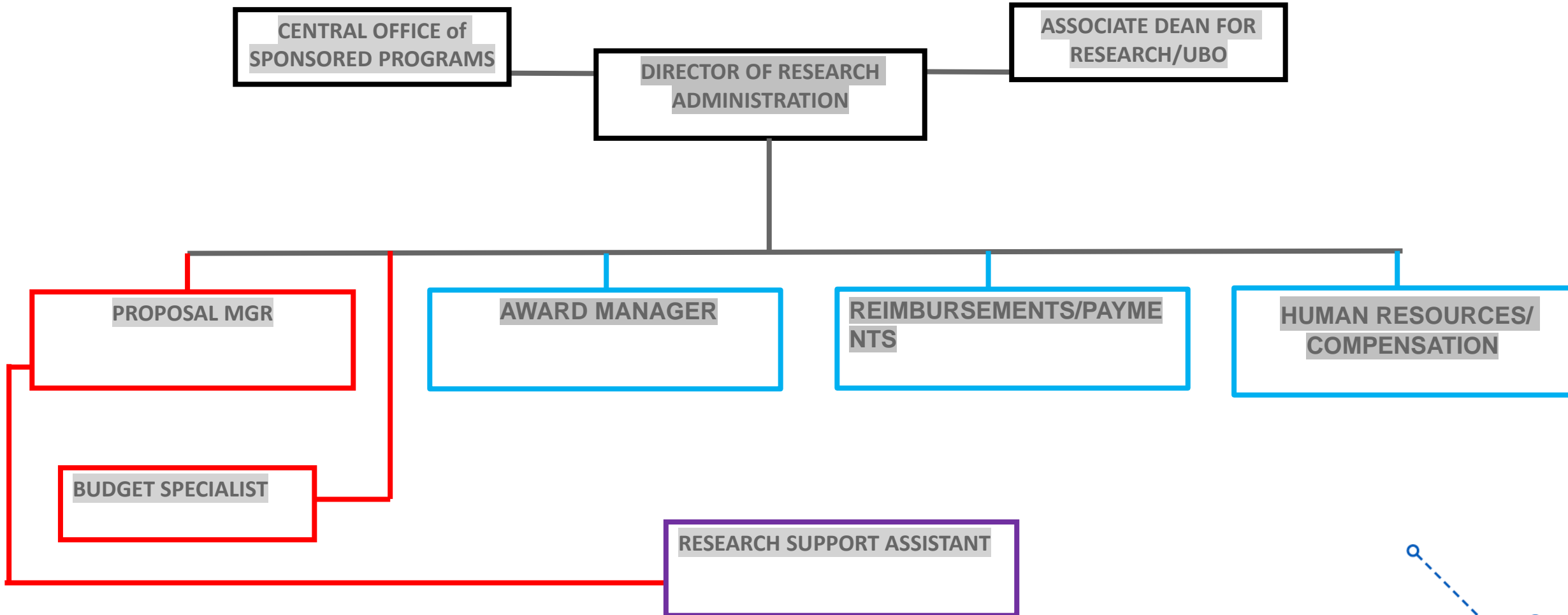
Existing SPS staff



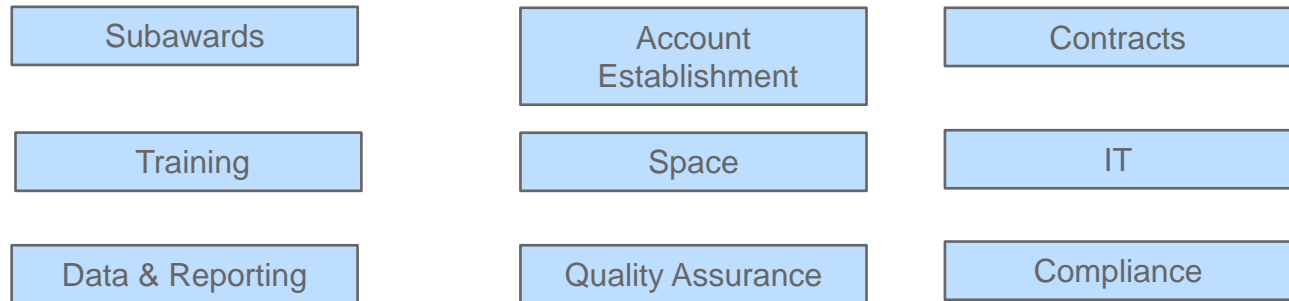
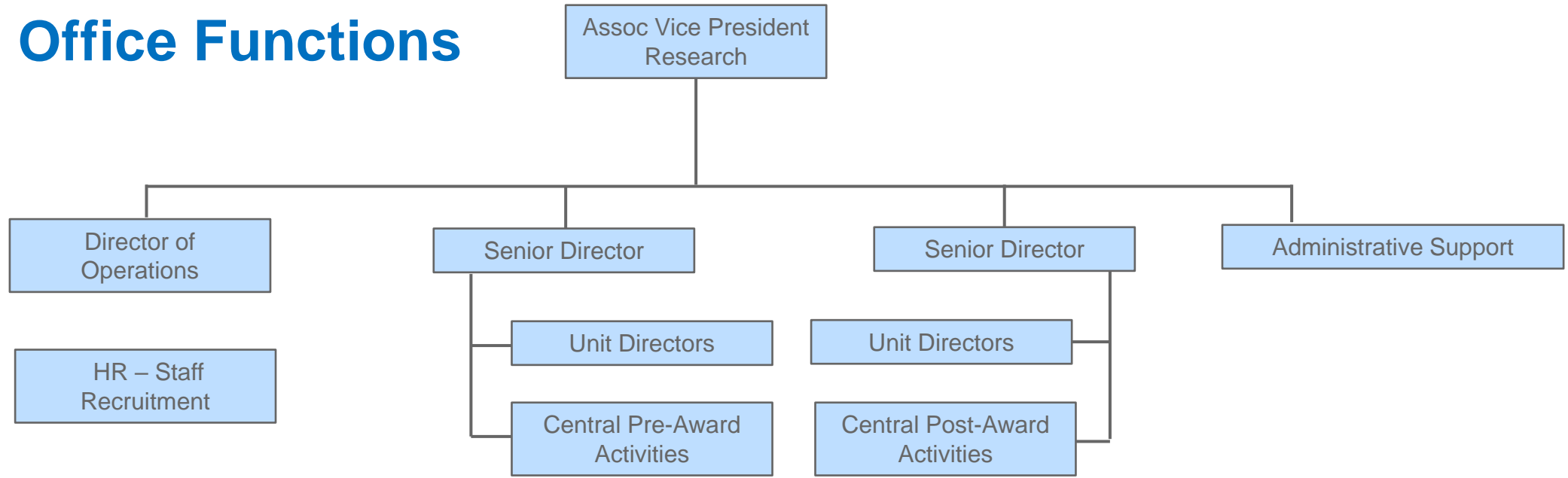
Search & Recruit



Decanal Unit Positions



Central Office Functions





Whew....

**Thank
You**

